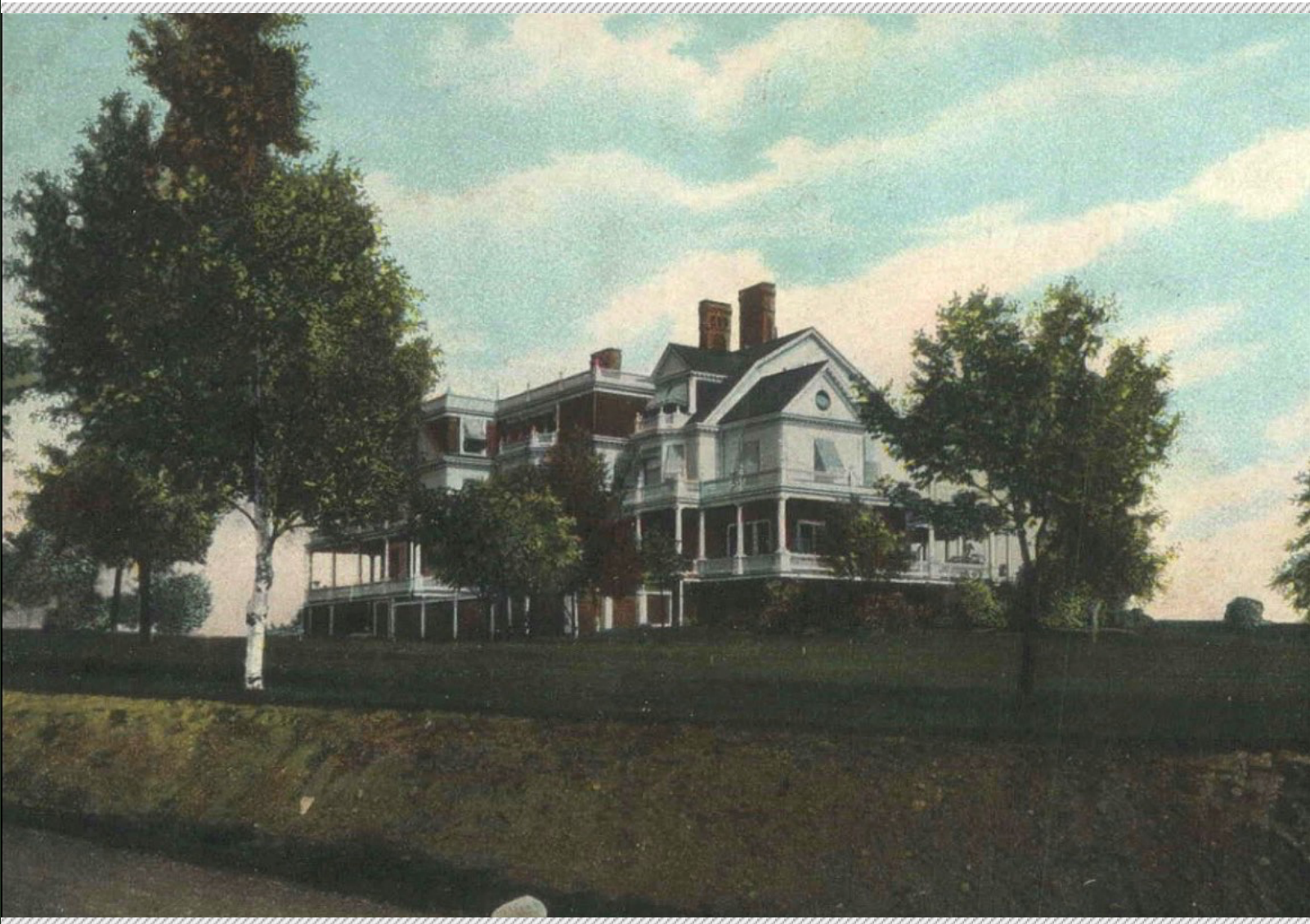




## The Gedney Association

*Celebrating 100 Years*

Volume 1: January 2025



Dear Gedney Farms Neighbors,

### Announcing the 100th Anniversary of The Gedney Association!

2025 marks the 100th anniversary of our historic neighborhood association! To celebrate this milestone, The Gedney Association will launch a series of special newsletters highlighting the rich history of our neighborhood. Each edition will feature historical facts, stories, and photos of Gedney Farms, offering a glimpse into its origins and growth over the years.

#### *The Origin of The Gedney Association*

In 1925, a group of dedicated property owners came together with a vision - to create and preserve a distinctive neighborhood that would stand the test of time. Their efforts led to the formation of The Gedney Association, an organization committed to maintaining the beauty, character, and community spirit of Gedney Farms.

The Gedney Association is the oldest neighborhood association in White Plains - and one of the oldest in the country. Annual dues were originally just \$3.00! Back then, it helped lay the foundation for an organization that's still going strong a century later. You can view the original Bylaws and 1925 Constitution [here](#). Stay tuned for details on a special event as we celebrate 100 years of history and community, honoring our past and building our future!

#### *The Original Board of Directors (1925)*

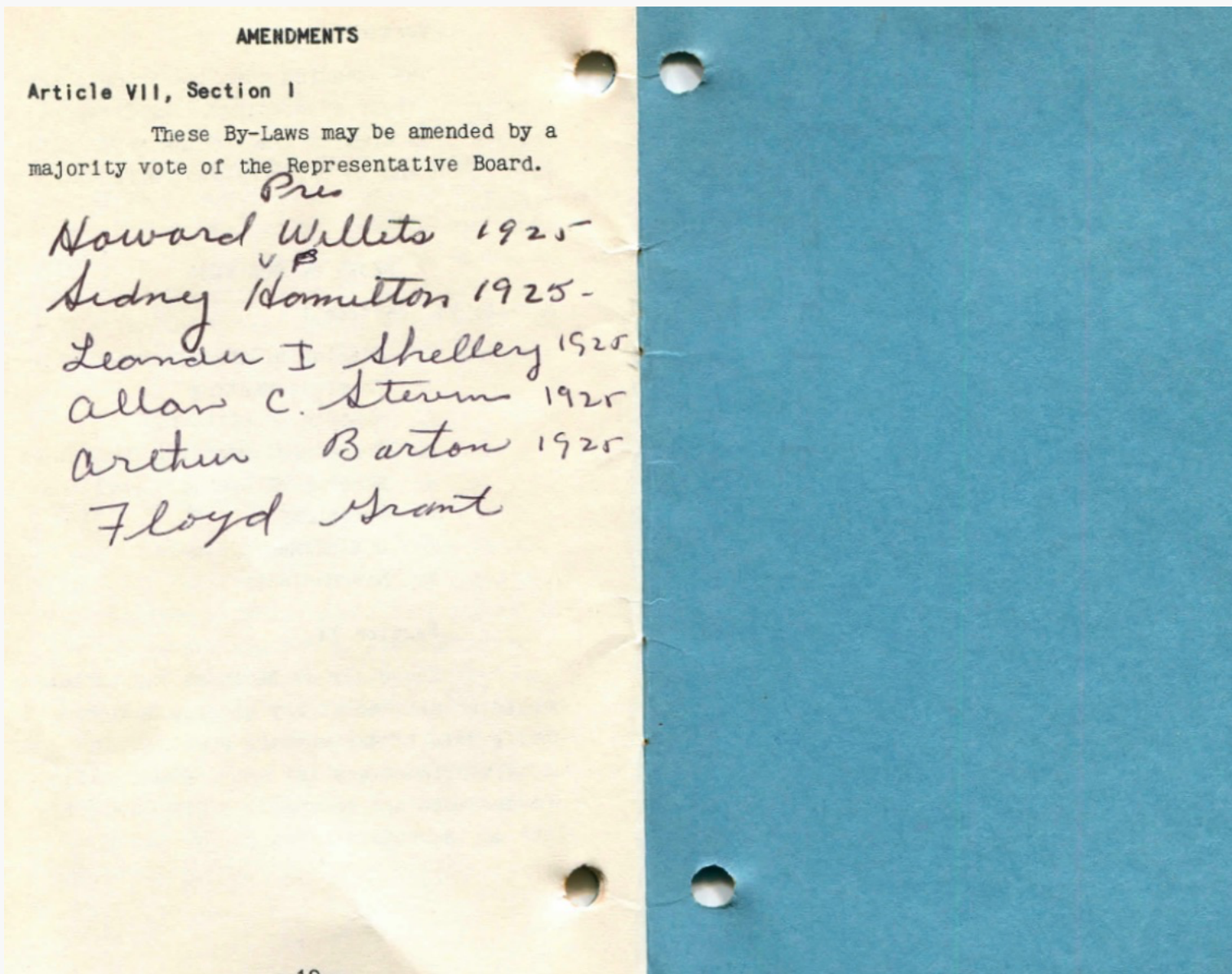
- Howard Willets, President
- Sidney Hamilton, Vice President
- Leander I. Shelley
- Allan C. Stevens
- Arthur Barton
- Floyd Grant

#### *We Want to Hear from You!*

If you have historical information, photos, or personal stories about Gedney Farms, we invite you to contribute. Your memories and insights will help us create a meaningful tribute to the neighborhood we all love. Please email your contributions to [info@gedneyfarms.net](mailto:info@gedneyfarms.net). We'd love to hear from you!

Warm regards,

The Gedney Association



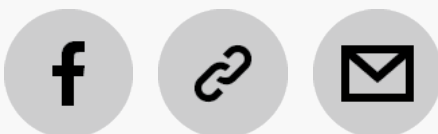
Last page of 1925 Bylaws and Constitution with a list of original Board Members.

#### Board Members

John Sheehan, President  
John Rand, Vice President  
Al Dold, Treasurer  
Melanie Kolby, Information Off.  
Carol Corbin, Secretary  
Ellen Berger  
Ellen Del Vecchio-Lee  
Linda Eisen  
Christian Garcy  
Judy Lee  
Jordan Lender

#### Membership & Dues

Annual membership dues of \$45 directly support preserving and enhancing Gedney Farms' historical and residential character. They also help fund neighborhood events like the Fall Family Festival and other events. Click [here](#) to learn more and explore payment options.



Copyright © 2025 Gedney Association, All rights reserved.

Want to change how you receive these emails?  
You can [update your preferences](#) or [unsubscribe from this list](#).

